



## TRUE 3D MODELING SOLUTION FOR DIGITAL CITY

### 1. 3D Digital City Construction

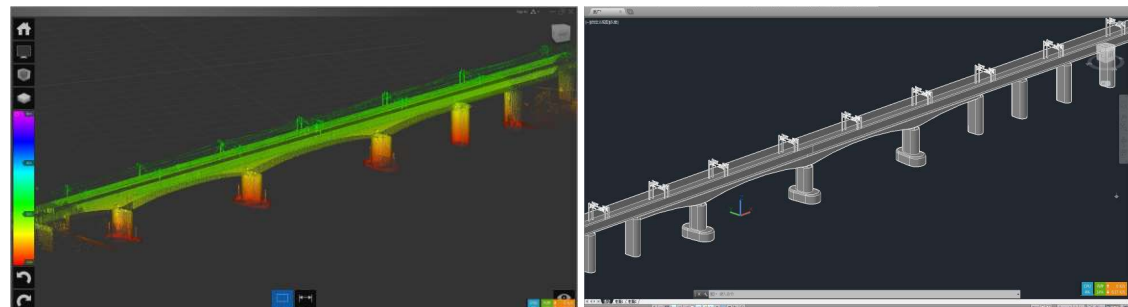
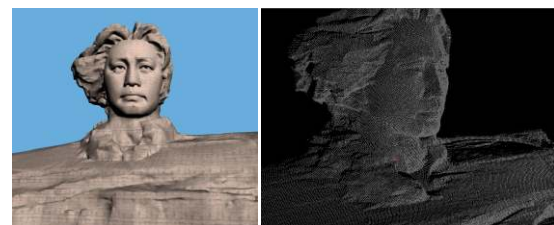
**Project Examples:** Hefei, Shanghai, Yuxi, Chongqing, Changsha, Zhoushan and other cities in China.

**Data Processing Centers:** Beijing office and Guangzhou office, with 2000m<sup>2</sup> closed security zone complied with industry standard.



### 2. Fast & Precise 3D Modeling Reconstruction

3D digital city modeling can be realized with laser scanning techniques, including ground LiDAR, automotive LiDAR and airborne LiDAR that are all up-to-date methods of vividly demonstrating and characterizing a city in particular. The spatial 3D information and human-computer interaction come up with precise 3D modeling with impressive spectacles based on intuitive and visualized effect, very useful for urban applications such as city planning, earthwork construction, security control, disaster prevention and environmental protection, etc.



### 3. Oblique 3D Aerial Photogrammetric Modeling

The ability to extend 2D visualized orthophotos taken from perpendicular angle only into 3D analytical models with façade texture and geometry information is one of the most significant developments in GIS technology nowadays. Instead of a single photographic sensor, an integrated 5-lens camera system simultaneously captures objects in perpendicular as well as other 4 oblique angles which are eventually consolidated into one 3D model restoring the reality intuitively, veritably and visually.

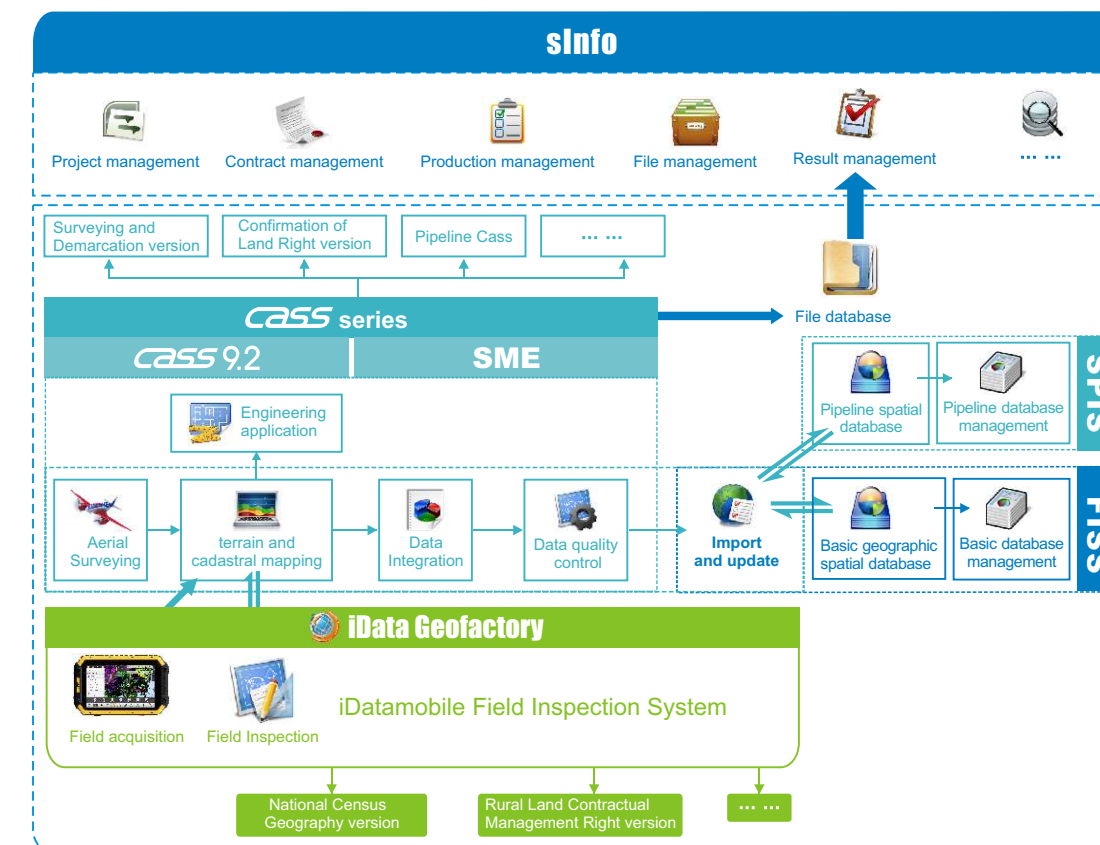


## ENGINEERING OF SURVEYING & MAPPING

SouthGIS also deals with data acquisition prior to data processing and the acquired Class-A certifications in surveying & mapping, land management, etc. have enabled the company to cover the following, general survey of national geo-information, general survey of address name, cadastral survey (proprietaryship, management right, usufruct and land investigation, etc.), underground piping investigation (irrigation works, gas pipes and complex pipes, etc.), GIS data updates (place name, address alternation, police-purpose information and landscape investigation, etc.), engineering survey (public works, earthwork construction, topographic works and piping layout, etc.), land management (general and detailed planning of land resources, farmland protection, etc.).



The informatized surveying & mapping solution integrates data acquisition, mapping, monitoring, databasing, management, encryption and applications, which definitely helps you to step into informatized urbanization era with great efficiency and leisure.



Service Hotline: +86-400 606 9090  
 Add: 4/F, Surveying Building, No. 24-26 Ke Yun Road,  
 Tian He District, Guangzhou 510665, China  
 Tel: +86-20-23380999 / Fax: +86-20-85529456

## ONE-STOP DATA PROCESSING PACKAGE SOLUTION

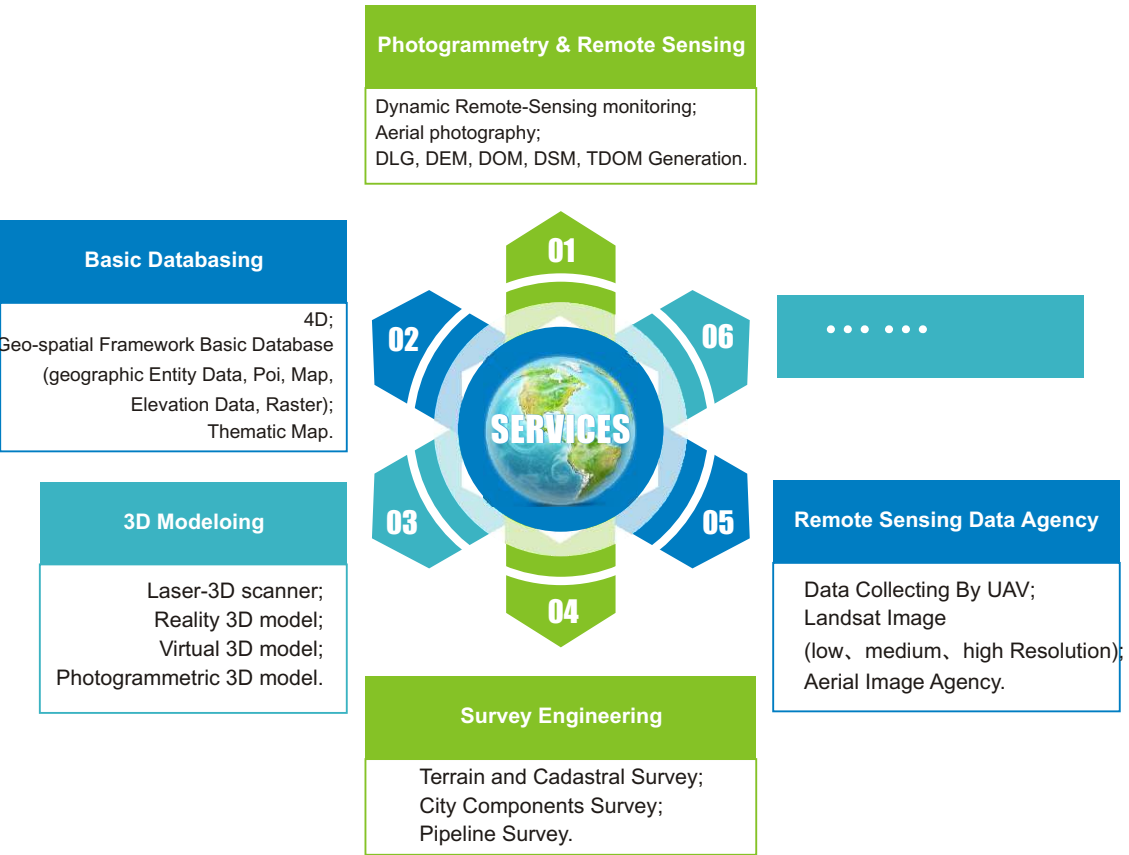
400-606-9090  
 www.southgis.com





# ONE-STOP DATA PROCESSING PACKAGE SOLUTION

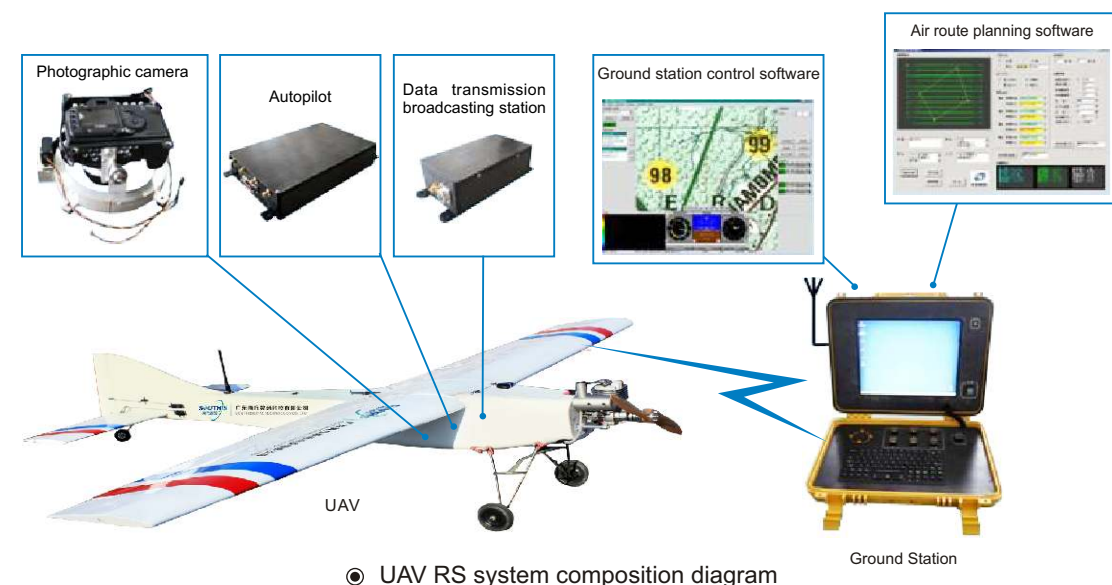
Geo-information industry and its numerous applications undoubtedly have become a new growth point driving economic development of the world, and therefore many governments as well as the international geomatics society have proactively propelled the Geo-information+ strategy to form new business models, new products and service modes in terms of comprehensive analysis, development and utilization. SouthGIS is a professional company providing one-stop services consisting of data acquisition, data processing and data application that are expertly tailored to the needs. All such solutions are scientifically packaged to enable customers to customize and differentiate their GIS productions and applications related to national land resources, surveying & mapping, housing construction, urban planning, landscape design, city management, water conservancy, civil affairs, public security, power system, gas control, agricultural development and environmental protection, etc.



# PHOTOGRAMMETRY & REMOTE SENSING

## 1. UAS Aerial Photogrammetry

It's the latest technology that has been widely used in modern surveying, which comes after satellite remote sensing and airplane remote sensing. A specialized team with rich experience from a number of flights capturing thousands of square kilometers would help to get your skyways run perfectly.

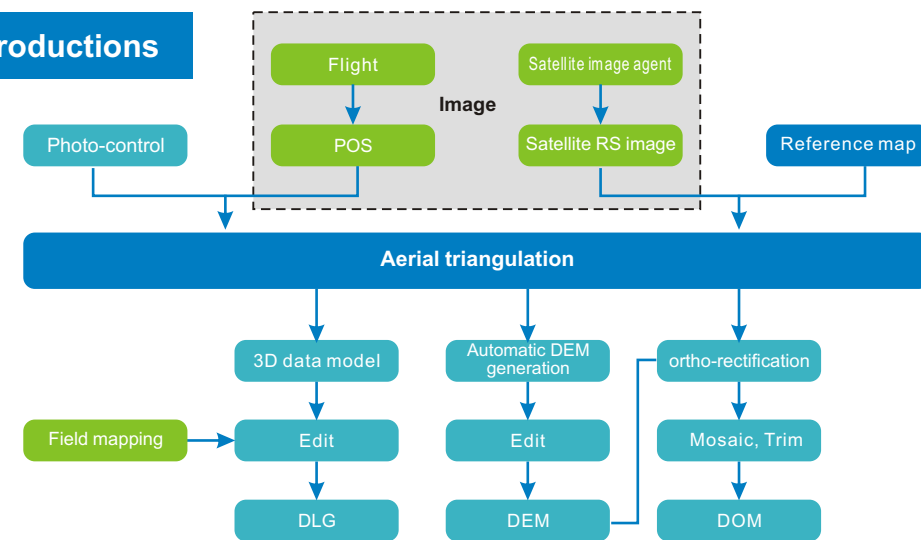


## 2. High-resolution Remote Sensing Image Data Service

SouthGIS has been authorized to represent and distribute the imagery from the world's top 3 commercial earth observation satellites, including QuickBird, WorldView-1 and WorldView-2, ready to meet the diverse requests of panchromatic, multispectral, stereo, and monolithic imageries. Such high-resolution image data plus remote sensing value-added service and spatial data applications comes with an integrated package.

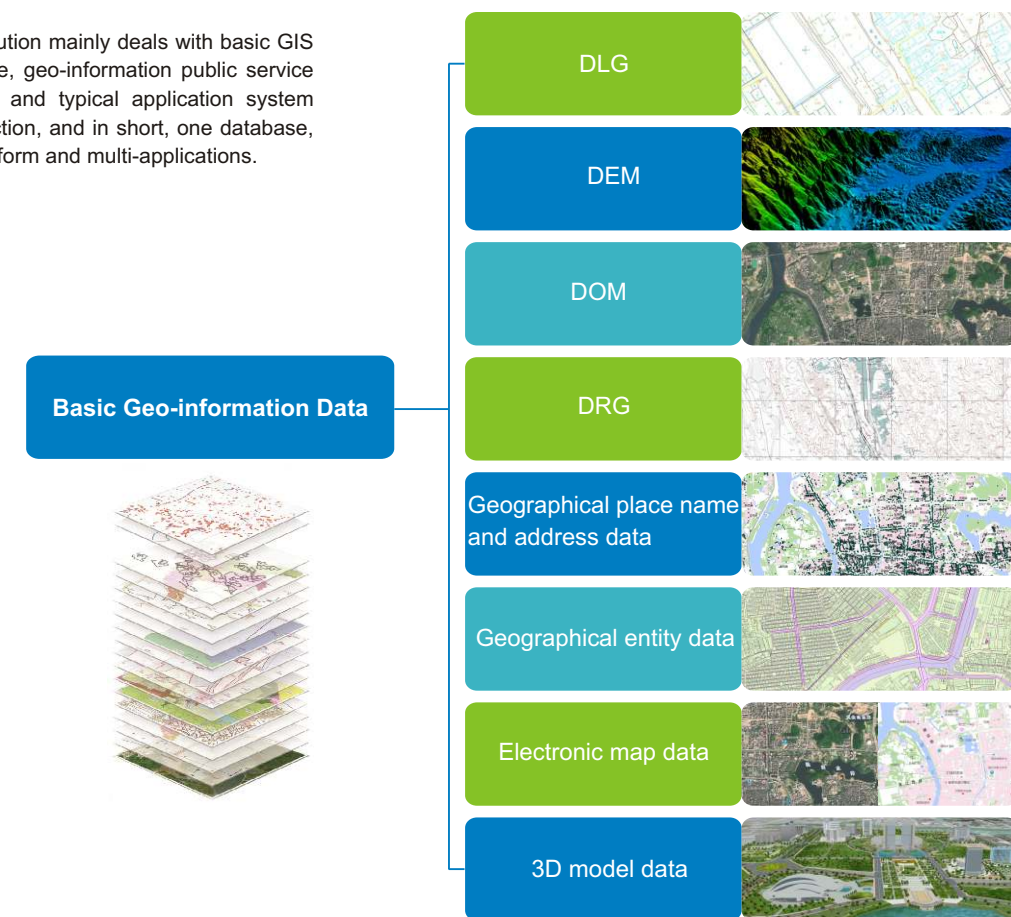


## 3. Data Productions

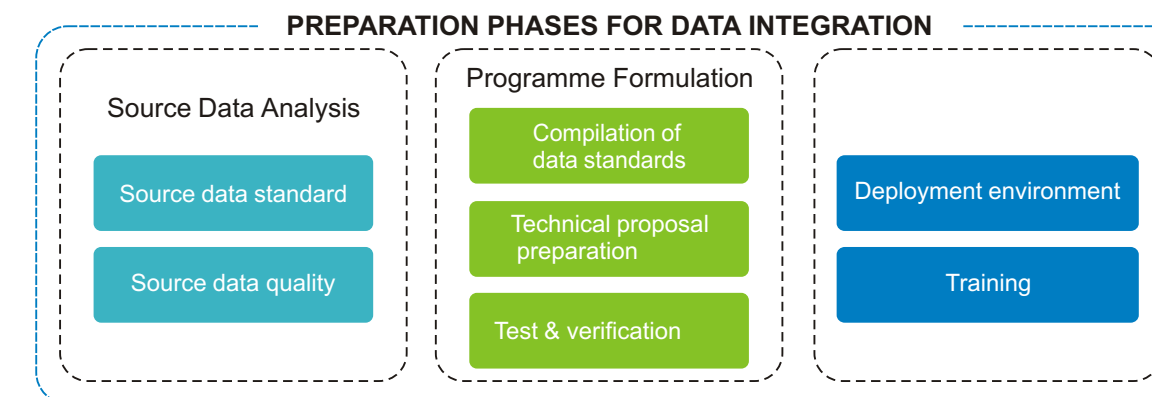


# BASIC GEO-INFORMATION DATABASING SOLUTION

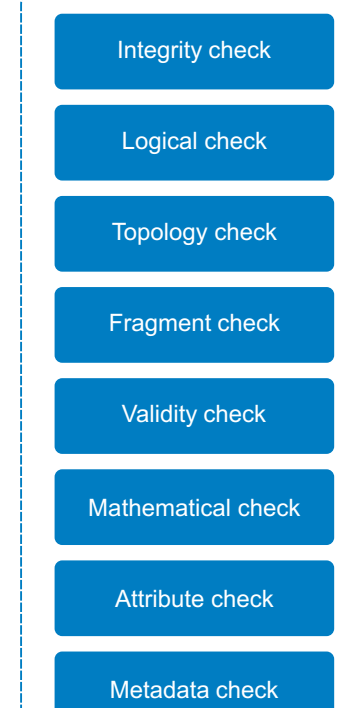
This solution mainly deals with basic GIS database, geo-information public service platform and typical application system construction, and in short, one database, one platform and multi-applications.



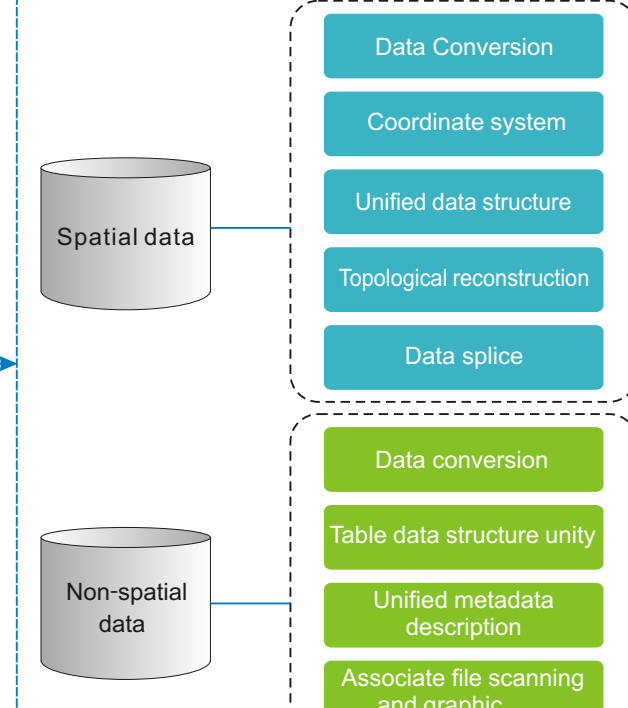
## Data Integration Preparation



## QUALITY CHECK



## DATA INTEGRATION



Result control

## INSPECTION & ACCEPTANCE

