

# DL Series Digital Level



- Advanced Accuracy
- Trigger Key Function
- 3.0 Inch Colorful Touch Screen for DL-2003A
- Magnetical-damped Compensator
- Multiple Data Transform
- Bluetooth Remote Control for DL-2003A



DL-2003A

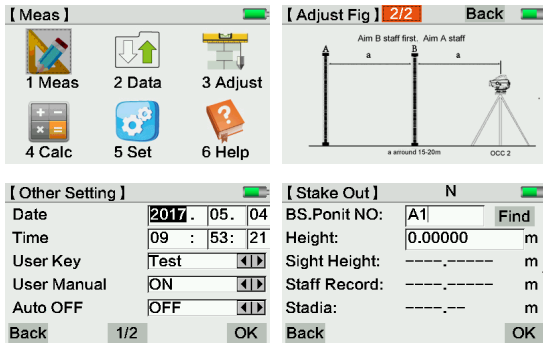


DL-2007

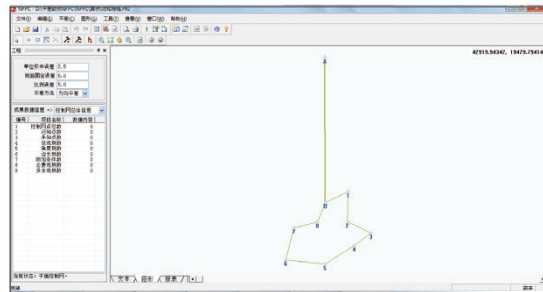


DL-202

## Software



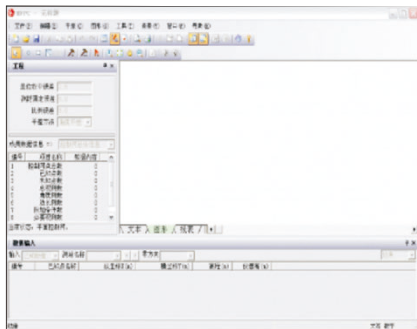
### Intelligent On-board System for DL-2003A



### Powerful Post-processing Software

It contains adjustment routines for dynamic adjustment of horizontal & vertical control network and angle & direction adjustment.

Easily zoom in or out to see the overall data in graphic.



### Seamless Transfer with Various Data Formats

Station	SD Length	Acc Sight Dist Length	SD Diff	d	Height Diff
1	35.2335	35.2335	0.1135	0.1135	
2	54.662	89.9155	-0.262	-0.1485	
3	48.915	138.8305	-0.937	-1.0855	
4	35.088	173.9185	-0.458	-1.5435	
5	37.1896	211.1080	-0.8915	-2.2350	
6	55.159	266.2670	0.731	-1.5040	
1	55.1430	55.1430	-0.7300	-0.7300	
2	37.1975	92.3405	0.5835	-0.1465	
3	35.1625	127.4430	0.4855	0.3390	
4	48.9655	176.3485	1.0975	1.4365	
5	54.6470	230.9955	0.2240	1.6605	
6	35.2170	266.2125	-0.3260	1.3345	

### Precision Analysis & Report

The DL Data Download & Processor Software, makes the field work easier to display the complex leveling tasks.

## Specifications

Item	DL-2003A	DL-2007	DL-202	
Height Accuracy (standard deviation for 1km double run leveling)	Digital Reading	0.3mm	0.7mm	1.5mm
	Optical Reading		2.0mm	
Distance Accuracy	Digital Reading	D≤10m:10mm; D>10m:D*0.001		
Distance Range	Digital Reading	1.8m~110m		
Minimum Display	HD	0.01mm/0.1mm/1mm	1mm/0.1mm	0.1mm/1mm
	Distance		0.1/1cm	
Measuring Time	Within 3s in normal condition			
Telescope	Magnification	32X		
	Resolving Power	3"		
	Field of View	1°30'		
	Multiple Constant	100		
Compensator	Additive Constant	0		
	Type	Magnetic-damped		
	Range	>±12'		
Battery	Accuracy	0.20"/1'	0.30"/1'	0.50"/1'
	Operating Time	16 hours		
Data Storage (for only DL-201, DL-2007)	Storage	128MB	16MB	
	Point Name	Increasing/Decreasing/Customized		
	Connection	RS232/Bluetooth	USB	
	External Storage	U disk	SD Card	--
Circular vial Accuracy	8'/2mm			
Display	3.0 inch LCD Colorful Touch Screen	160*64dpi LCD with illumination	128*32dpi LCD with illumination	
Working Temperature	-20°C~50°C			
Dimension	230mmX225mmX203mm	230mmX150mmX210mm		
Weight	3.1kg	2.5kg		
IP Standard	IP65	IP54		

## Invar Staff NSI-20M Specification

1	Circle Bubble		≤12'/2mm
2	Surface curvature distinction		≤4mm
3	Vertical of central axis and underside		≤5'
4	Tolerance of zero point		≤0.05mm
5	Basic barcode graduation tolerance	Deviation	≤0.02mm
		Standard deviation	≤0.013mm
6	Interval tolerance		≤0.04mm