

Simplify your leveling

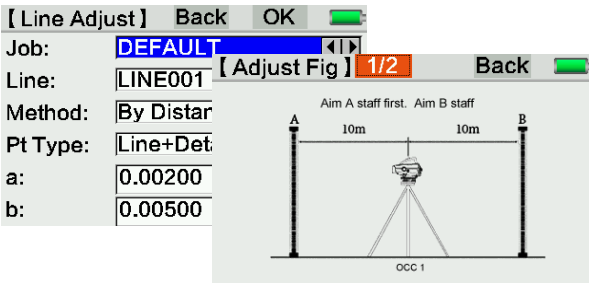


Features

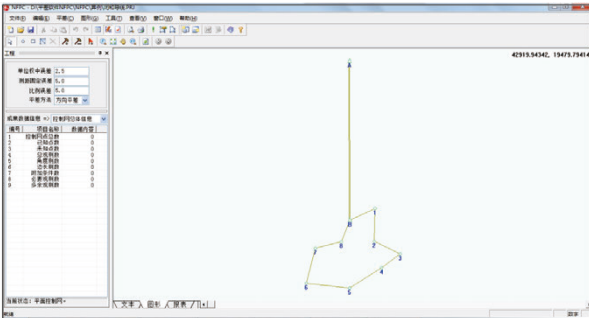
- Advanced Accuracy
- Height:0.7mm; Distance:D*0.001mm
- Trigger Key Function
- Multiple Data Transform
- Stable Bluetooth Remote Control
- Various Application with Humanized Software
- Fully Protection in IP65



Software

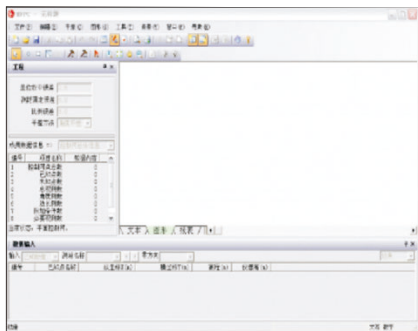


Intelligent On-board System



Powerful Post-processing Software

It contains adjustment routines for dynamic adjustment of horizontal & vertical control network and angle & direction adjustment. Easily zoom in or out to see the overall data in graphic.



Seamless Transfer with Various Data Formats

Station					HeightDiff				
StationNum	SD_Length	AccSignDist.Length	SD_Off	d	StationNo	SD_Length	AccSignDist.Length	SD_Off	d
1	35.2335	35.2335	0.1135	0.1135	1	17.676	17.676	0.1135	0.1135
2	54.682	89.9155	-0.262	-0.1485	2	27.29	27.475	0.2214	0.2214
3	48.915	138.8305	-0.937	-1.0655	3	23.99	24.926	0.9134	0.9133
4	35.088	173.9185	-0.458	-1.5435	4	18.937	18.989	1.5136	1.5141
5	37.1895	211.1089	-0.6915	-2.2359	5	17.745	17.773	0.1744	0.1743
6	55.139	266.2479	0.731	-1.5049	6	4.498	4.525	0.1744	0.1743
1	55.1439	55.1439	-0.7399	-0.7399					
2	37.1975	92.3495	0.5835	-0.1465					
3	35.1025	127.4439	0.4855	0.3399					
4	48.9055	176.3485	1.0975	1.4365					
5	54.6479	230.9955	0.2249	1.6605					
6	35.2179	266.2125	-0.3269	1.3345					

Precision Analysis & Report

The DL Data Download & Processor Software, makes the field work easier to display the complex leveling tasks.

Detail Show



New Collimator Design



New Colors



Trigger Key



Easy Carry

Performance

Height

Electronic Measurement: 0.7mm

Optical Measurement: 1.5mm

Distance Measurement

Accuracy: $D \leq 10m: 10mm; D > 10m: D * 0.001$

Range: 1.8m – 110m

Electronic Measurement

Resolution Height Measurement: 0.01mm/0.1mm/1mm

Resolution Distance Measurement: 0.001m

Measure Time: Less than 2.5 sec

Telescope

Magnification: 32x

Field of view: 1°20'

Multiple constant: 100

Additive constant: 0

Compensator

Compensation range: $\pm 15'$

Accuracy: 0.3"

Circular level sensitivity: 8'/2mm

Size

LxBxH: 235mmx240mmX200mm

Weight: 3.1kg

Power Supply

Voltage: 3400mAh, 7.4V

Operating Time: 20 hours

Environmental

Operating Temperature: $-20^{\circ}C \sim +50^{\circ}C$

Dust and water proof: IP65