

RobotSLAM Lite II

Compact. Lightweight. Intelligent.



- back to original
- 990 gram only
- live cloud display
- on-site process



A *user-friendly* SLAM handheld is supposed to be **toolless assembly**, **cableless operation**, and **lightweight**. RobotSLAM Lite II, featuring **entry-level** and **affordability**, is designed to **fit indoor scans** mostly due to its maximum range 70m and typically effective range 40m.

1-step
assembly

power on to
scan

realtime...
...on-site...

ROBOT
SLAM

Series	RobotSLAM
Model	RobotSLAM Lite II
Dimension	130 x 90 x 290 mm (w/o base stand)
Weight	0.99 kg
Laser Wavelength	905 nm
Laser Safety Class	Class 1 (IEC 60825-1:2014), eye-safe
Scan Range	0.1-70m (70m/40m @80%/10% reflectivity)
Scan Rate	200,000 pts/sec
LED Screen	available for status display
IMU Module	built-in, with push frequency 200 Hz (when enabled)
Camera	built-in, 13 MP fish-eye
Relative Accuracy	best up to 1 cm
Realtime Point Cloud	available, to display via APP
Realtime Trajectory	available
Power Supply	handgrip with inbuilt battery, cable free
Endurance	2-2.5 hrs
Input Voltage	DC 9-27 V
Anti-interference	available
Temperature	-20°C~65°C (operating); -40°C~70°C
IP Rating	IP 67 (laser scanner sensor)



www.southinstrument.com



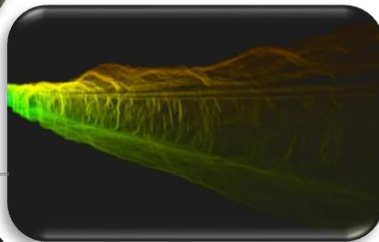
solutions@southsurvey.com

Building Interior



Architecture Facade

Tunnel Engineering



Stockpile Calculation

Landscape Reconstruction



Emergency Response

